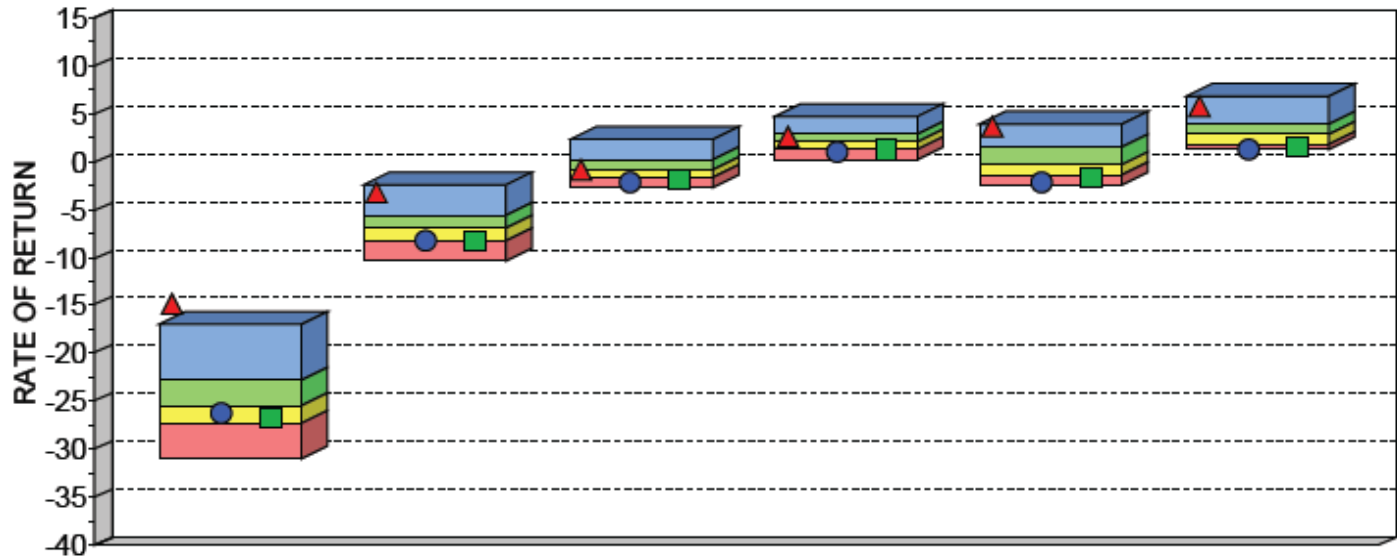


SUNCOAST EQUITY MANAGEMENT PSN LARGE CAP CORE UNIVERSE 1,3,5,7, 10 YEARS AND INCEPTION DECEMBER 31, 1997 TO JUNE 30, 2009



	1 Year	3 Years	5 Years	7 Years	10 Years	Since Inception
HIGH (0.05)	-17.07	-2.50	2.41	4.75	3.85	6.93
FIRST QUARTILE	-22.84	-5.52	0.06	2.86	1.57	3.92
MEDIAN	-25.44	-8.95	-0.88	1.95	-0.44	2.72
THIRD QUARTILE	-27.20	-8.16	-1.78	1.26	-1.49	1.72
LOW (0.95)	-31.03	-10.29	-2.83	0.24	-2.48	1.13
MEAN	-24.86	-6.79	-0.72	2.11	0.05	2.94
VALID COUNT	334	318	292	253	194	169

	1 Year		3 Years		5 Years		7 Years		10 Years		Since Inception	
	VALUE	RANK	VALUE	RANK	VALUE	RANK	VALUE	RANK	VALUE	RANK	VALUE	RANK
▲ Suncoast Equity Growth	-14.81	1	-3.22	4	-1.00	53	2.69	28	3.51	1	5.84	4
● Standard & Poor's 500	-26.22	64	-8.22	76	-2.24	92	0.92	88	-2.22	95	1.25	95
■ Russell 1000	-26.69	70	-8.20	76	-1.85	77	1.35	70	-1.75	82	1.50	81

Effron/PSN Chart: Provided by Effron/PSN, a nationally-recognized database provider of information on investment managers, this chart shows our individually managed accounts performance over various time periods relative to both the S&P 500 Index and a universe of 169 other equity investment products. Since inception in 1998, Suncoast Equity has performed in the top 4%. The performance comparison in the graph above is shown gross of management fees for all investment products.